



26 Wellington Hill

, Bristol, BS7 8SR

£4,050 Per month

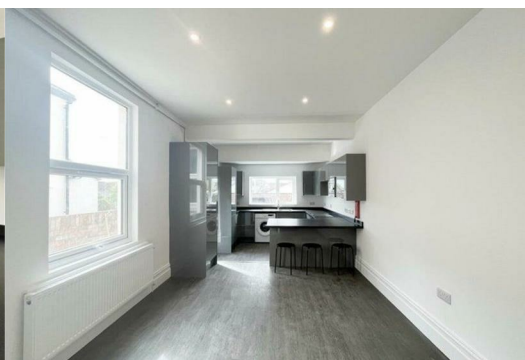


****STUDENT PROPERTY - AVAILABLE AUGUST - ALL BILLS INC PACKAGES****

A spacious six double-bedroom student house located in the highly sought-after area of Horfield, BS7, offered with an all-inclusive bills package and available from August 2026. This property is ideal for UWE students, with excellent transport links to Bristol City Centre and a wide range of nearby amenities.

Situated on Wellington Hill, this 6 bedroom student property in Horfield is ideally positioned close to the vibrant Gloucester Road, offering easy access to shops, supermarkets, cafés, bars, restaurants, gyms, and takeaways. The property also benefits from being within walking distance of regular bus links to UWE and the City Centre, making it perfectly suited to student living.

The house offers generous communal living space, ideal for socialising and relaxing, alongside a well-equipped kitchen suitable for a group of six. There are six well-proportioned double bedrooms, each designed for comfortable student living.



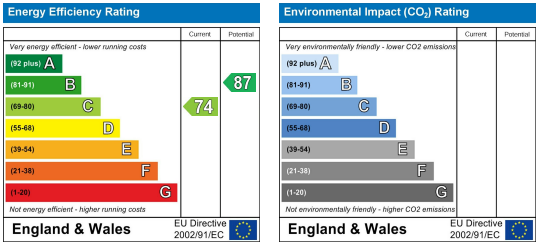
Area Map



Floor Plans



Energy Efficiency Graph



These particulars, whilst believed to be accurate are set out as a general outline only for guidance and do not constitute any part of an offer or contract. Intending purchasers should not rely on them as statements of representation of fact, but must satisfy themselves by inspection or otherwise as to their accuracy. No person in this firms employment has the authority to make or give any representation or warranty in respect of the property.

